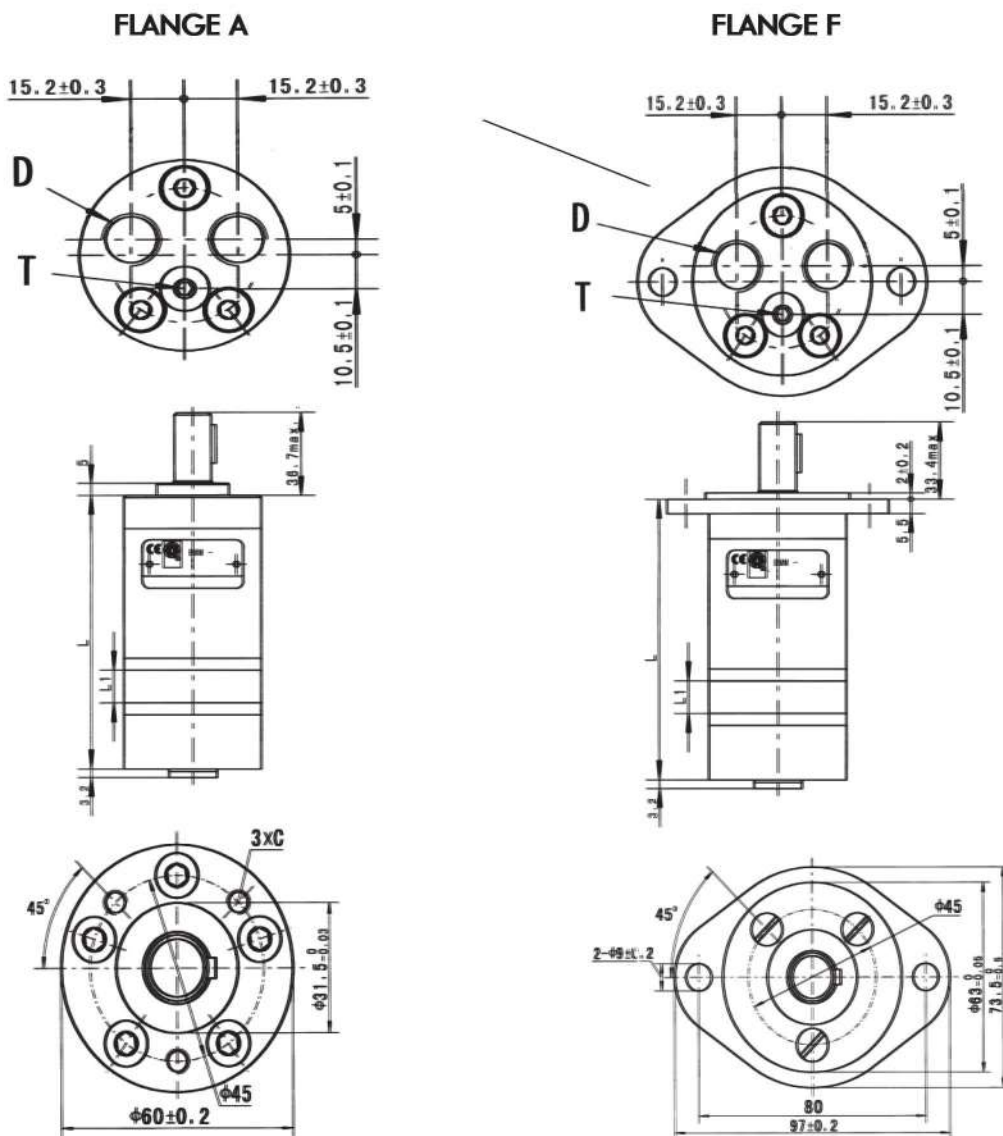




TECHNICAL DATA

Product	Displacement	Max. Flow	Pressure	Port type
	cm ³	l/min	bar	
BMM008C16AGE	8	16	100	END
BMM008C16AGS	8	16	100	SIDE
BMM012.5C16AGE	12.50	20	100	END
BMM012.5C16AGS	12.50	20	100	SIDE
BMM020C16AGE	20	20	100	END
BMM020C16AGS	20	20	100	SIDE
BMM032C16AGE	32	20	100	END
BMM032C16AGS	32	20	100	SIDE
BMM040C16AGE	40	20	90	END
BMM040C16AGS	40	20	90	SIDE
BMM050C16AGE	50	20	70	END
BMM050C16AGS	50	20	70	SIDE

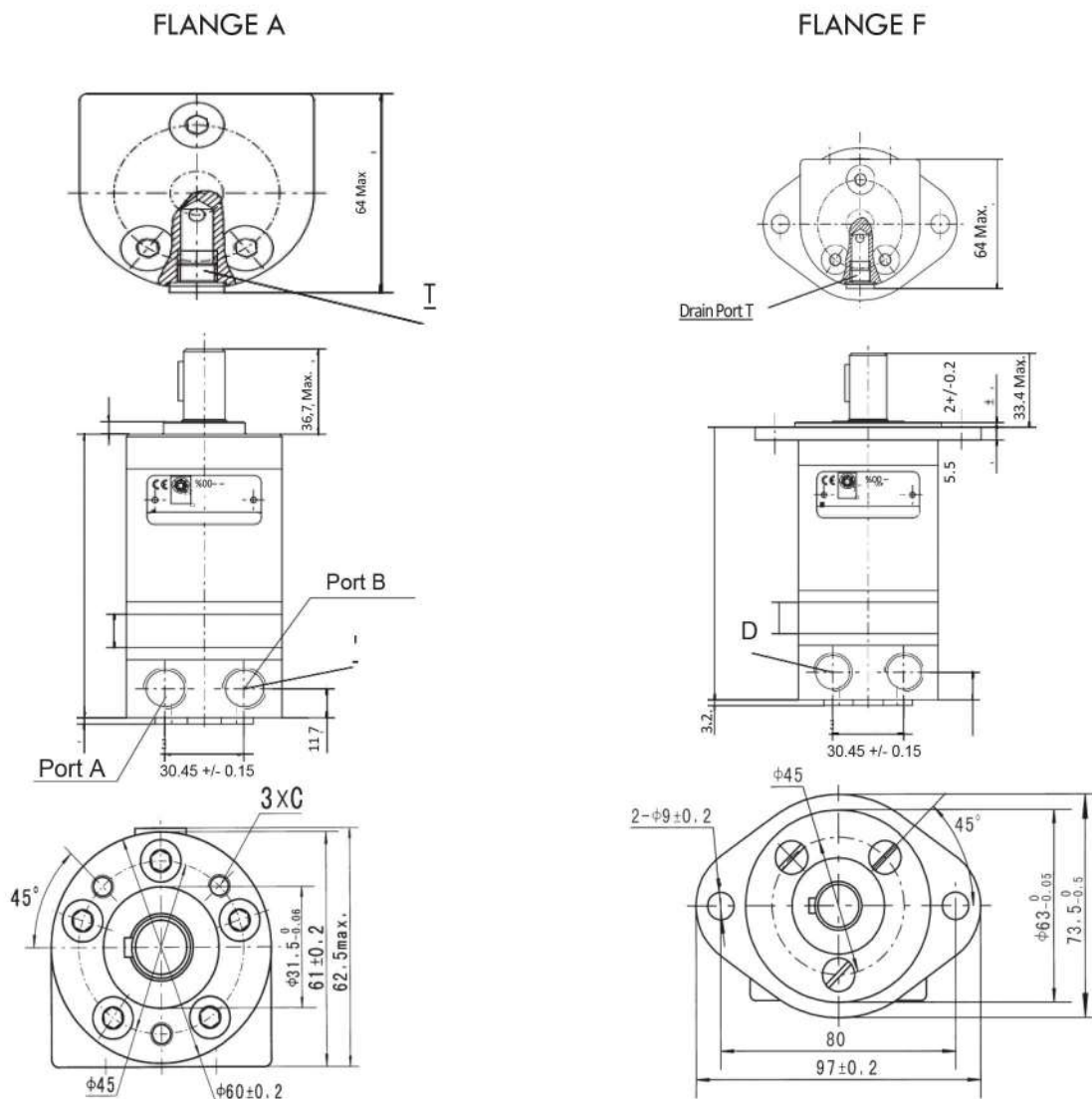
END PORT MODEL



Product	A FLANGE		F FLANGE	
	L	L1	L	L1
BMM008C16AGE	104	3.5	107.5	3.5
BMM012.5C16AGE	106	5.5	109.5	5.5
BMM020C16AGE	109	8.5	112.5	8.5
BMM032C16AGE	114	13.5	117.5	13.5
BMM040C16AGE	117.5	17	121	17
BMM050C16AGE	122	21.5	125.5	21.5

Mounting	Code	A FLANGE	F FLANGE
		1E (depth)	1E (depth)
	C	3-M6 (10)	-
	D	G3/8 (12)	G3/8 (12)
	T	G1/8 (8)	G1/8 (8)

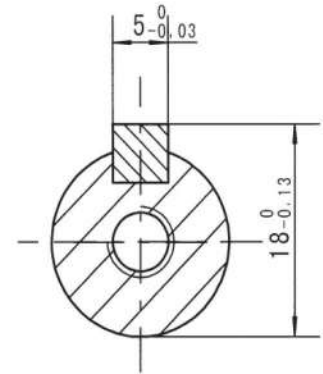
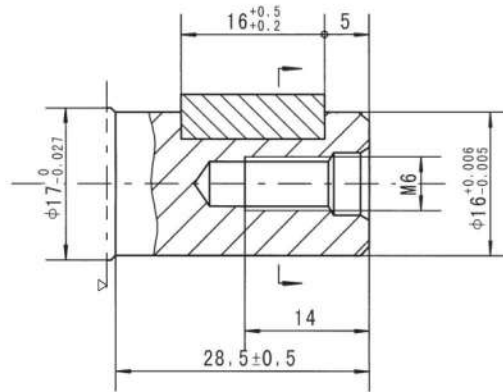
SIDE PORT MODEL



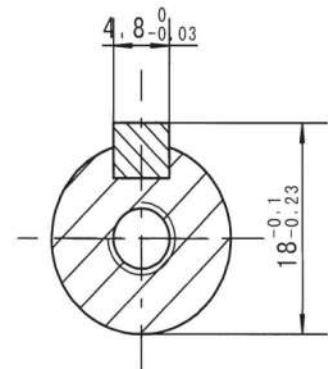
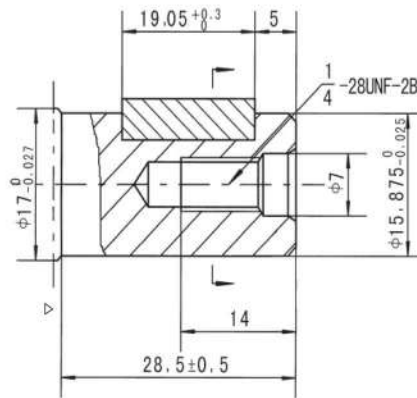
Product	A FLANGE		F FLANGE	
	L	L1	L	L1
BMM008C16AGS	105	3.5	108.5	3.5
BMM012.5C16AGS	107	5.5	110.5	5.5
BMM020C16AGS	110	8.5	113.5	8.5
BMM032C16AGS	115	13.5	118.5	13.5
BMM040C16AGS	118.5	17	122	17
BMM050C16AGS	123	21.5	126.5	21.5

Mounting	Code	A FLANGE	F FLANGE
		1E (depth)	1E (depth)
C		3-M6 (10)	-
D		G3/8 (12)	G3/8 (12)
T		G1/8 (8)	G1/8 (8)

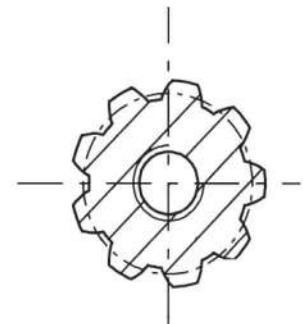
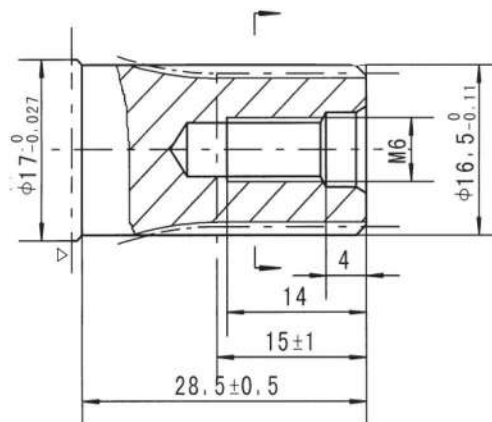
Shaft C16
Cylindrical shaft Ø16
Parallel key 5x5x16



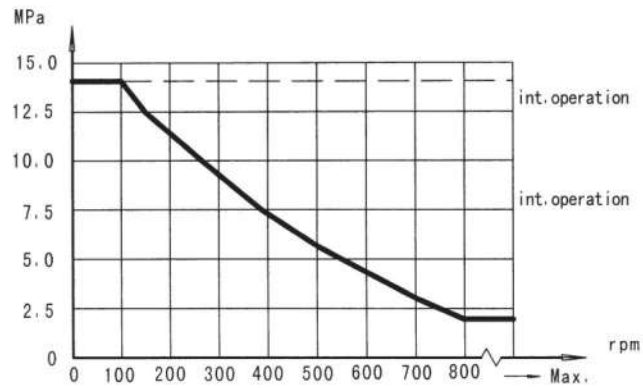
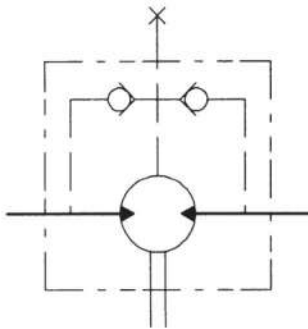
Shaft C15,875
Cylindrical shaft Ø15,875
Parallel key 4.8x4.8x19.05



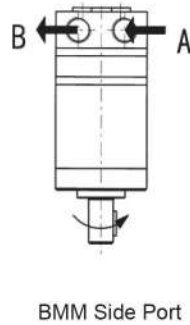
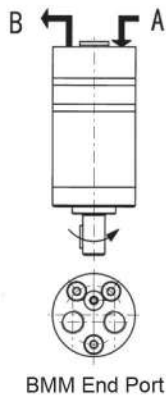
Shaft S
Involute splind shaft
B17x14 DIN5482



PERMISSIBLE SHAFT SEAL PRESSURE

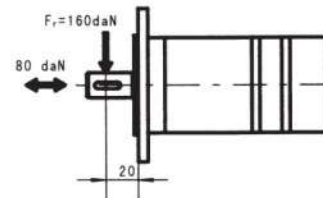


DIRECTION OF SHAFT ROTATION



STATUS OF THE SHAFT'S RADIAL FORCE

$$F_r = \frac{13040}{61.5 + L} \text{ daN}$$



F_r = Radial Force (daN)
 L = Distance (mm)
 n = Speed (rpm)
 Max. force load
 Rhomb-flange $L=15\text{mm}$
 Square-flange $L=20\text{mm}$



DISPLACEMENT (cm³)
 8
 12.5
 20
 32
 40
 50

SHAFT
 C15: Shaft ø16, parallel key
 C16: Shaft ø15.875, parallel key 5x5x16
 S: involute B17x14, DIN5482

PORTS
 GS: G3/8, G1/2
 GE: End Port G3/8, G1/8

FLANGE
 A: 3-M6 Circle-flange
 F: 28UNF Circle flange pilot ø31.5x5
 2-Ø9 Rhomb-flange, pilot ø63x2